



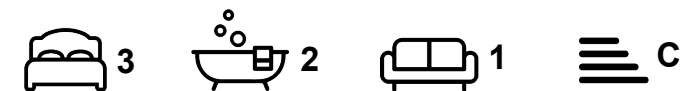
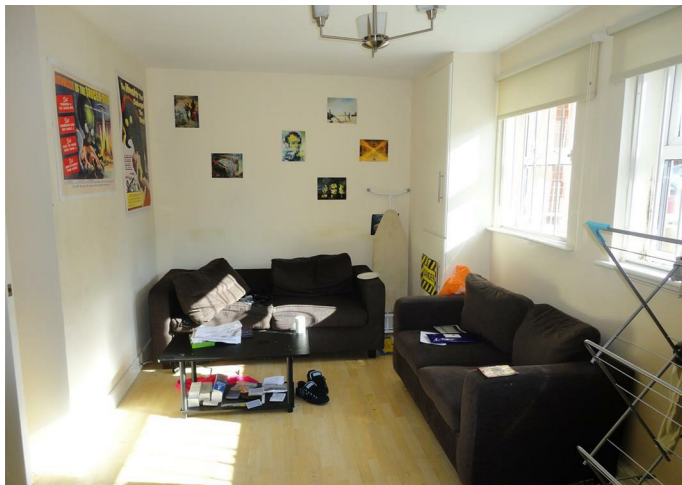
Flat

**FLAT 8,
HEADINGLEY RISE
WELTON ROAD,
HYDE PARK,
LEEDS, LS6 1EE**

Per Week

£297 Per

FEATURES



SJM ©
PROPERTIES

3 Bedroom Flat located in Leeds

Modern flat in purpose built block with parking and close to local shops in central Hyde Park.

Large lounge with sofa's, modern fitted kitchen.

3 good sized double bedrooms furnished with double bed, large wardrobe, chest of drawers, desk and chair. fully tiled bathroom with bath and separate shower room. double glazed and gas central heated throughout.

YOU CAN RENT THIS PROPERTY WITH BILLS INCLUDED FOR A TOTAL OF £129 PER PERSON PER WEEK

Call us on

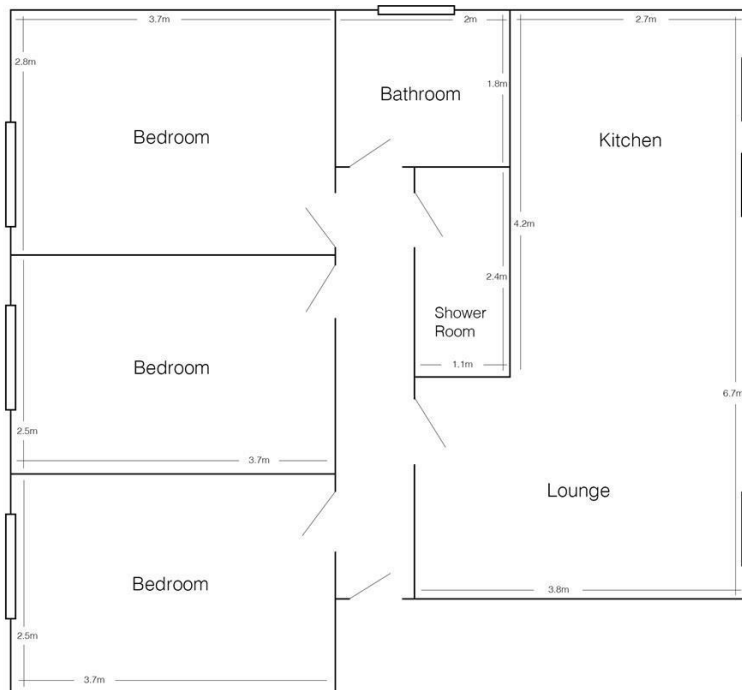
01132782201

phil@sjm-properties.com

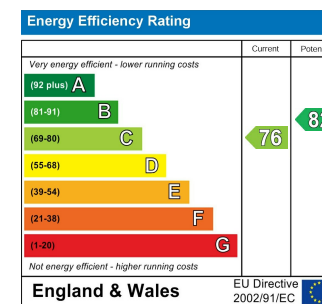
sjm-properties.com

Council Tax Band

A



8 Headingley Rise
(drawing not to scale)



Agents Note: Whilst every care has been taken to prepare these particulars, they are for guidance purposes only. All measurements are approximate and are for general guidance purposes only and whilst every care has been taken to ensure their accuracy, they should not be relied upon and potential buyers are advised to recheck the measurements.

SJM [©]
PROPERTIES